

WhatsUp Gold

WhatsUp Gold is a graphical network mapping, monitoring, reporting, and notification solution that helps you keep your mission-critical network up and running 24 hours a day, seven days a week. It provides a variety of views into your network status in real-time – alerting you when monitored devices and services become unavailable or specific system events occur which may affect network stability. As a result, your organization can improve employee productivity, increase customer satisfaction, and avoid lost revenue.

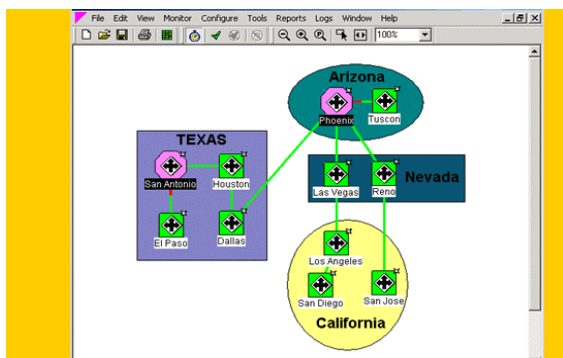
WhatsUp Gold is the affordable alternative to expensive and complicated network management systems. It gives you all the features you need for comprehensive real-time network monitoring at a fraction of the cost of other systems. After including implementation, training, hardware, and software costs, the total cost of ownership for WhatsUp Gold is tens of thousands of dollars less than for other network management systems.

Within larger organizations, individual departments may use WhatsUp Gold to monitor the availability of mission-critical applications such as Lotus Notes, Oracle, SQL Server, Sybase, Microsoft Exchange, or IIS. Or, WhatsUp Gold can complement the monitoring functionality in comprehensive end-to-end network management frameworks. Networks in small and medium-sized businesses may use WhatsUp Gold as their all-in-one network management system.

Summary of New Features in WhatsUp Gold

Mapping

The new mapping features in version 8.0 provide enhanced mapping flexibility and customization. During auto-discovery and active discovery, users select specific device types to include or exclude during discovery. This reduces bandwidth consumption over time by selectively discovering and subsequently monitoring only the most critical servers rather than the blanket discovery and monitoring of all network devices.



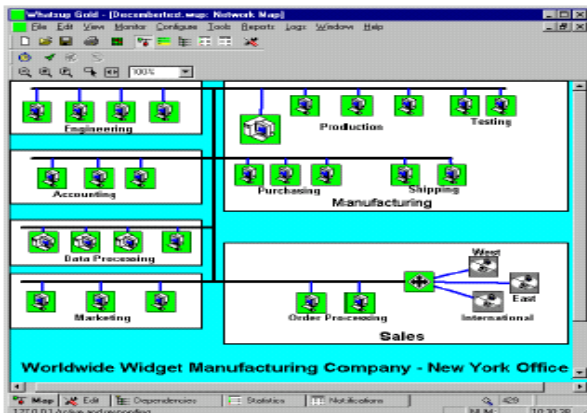
Monitoring

WhatsUp Gold's event log monitoring capabilities guarantee immediate awareness of critical events that occur within the network and are logged to the Event log (local and remote), Syslog, and SNMP Trap Log. WhatsUp Gold's added monitoring power goes beyond device uptime and performance by pinpointing and notifying of particular trouble events like security breaches, application or system errors which alter network security. Administrators can troubleshoot network problems by correlating device downtime or network strain to a specific event that occurs on the network. Additionally, WhatsUp Gold provides the ability to trigger an immediate alert of system events recorded as new entries in the Windows event view, syslog, or SNMP trap log.

Summary of WhatsUp Gold Basics

Create a Network Map

WhatsUp Gold gives you several ways to create new maps for your network. Using the SmartScan active discovery feature, WhatsUp Gold creates an accurate representation of your network based on information contained in your computer or on the network. Once WhatsUp Gold has created a basic map of your network, you can add to it using additional active discovery features or the Whatsup Gold map editor. The WhatsUp Gold map editor assists you in creating and modifying your network maps. It allows you to organize your maps in a manner that makes sense for you, while presenting them in a consistent and attractive form. Using the map editor, you can create, move, and delete individual network elements.



Custom Host Types and Icons

A standard set of commonly used device types and icons is used in creating the network maps that specify the devices to be monitored by WhatsUp Gold. With additional user-defined custom host types and icons, you can create any specialized device types you may need for your particular networks and specify any predefined icons you would like to associate with those devices. WhatsUp Gold saves time and improves monitoring accuracy with enhanced device identification, which automatically maps non-standard devices and custom services

All of these give you the flexibility you need to create a wide range of highly customized maps.

Monitoring Your Network

Once you have created a network map and set up associated map properties, you can further define individual network device properties (including alerts and notifications) or you can begin monitoring immediately with defaults.

During monitoring operations, WhatsUp Gold makes effective use of color codes, which are customizable, to indicate the status of the various devices. WhatsUp Gold polls defined devices in the order in which they were created in the network map. You can change the polling sequence and set up or down dependencies as needed so you only get notified about devices that matter. When monitoring, you can display up-to-the-minute status information about a particular device by simply pointing to it and double-clicking the left mouse button.

With WhatsUp Gold's active discovery, network administrators can better manage dynamically changing networks by performing scheduled scans for new devices and map them with appropriate monitoring policies.

Services and Application Monitoring

WhatsUp Gold's services monitoring capability allows you to create globally available service definitions that may be specified for monitoring on any device or map. This allows you to set up monitoring for virtually any service by connecting to a particular port, sending a command string, and examining the character string sent by the service in response. A GUI-based facility for specifying regular expressions allows you to test the character patterns received. WhatsUp Gold imposes no limitations on the number of service definitions users may create.

System Requirements

- Intel Pentium or equivalent
- Windows 98, 2000, ME, NT4.0, SP5
- Disk space: 30MB Min, 100MB recommended
- Memory: 64MB, 256 recommended

UK RESELLER

Computers Plus

Century House

Westcott Venture Park

Westcott

Bucks, HP18 0XB UK

Tel: +44 1296 658947

Web: www.plustech.co.uk