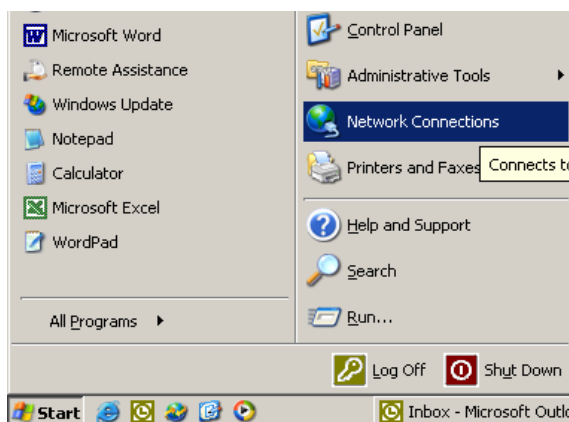
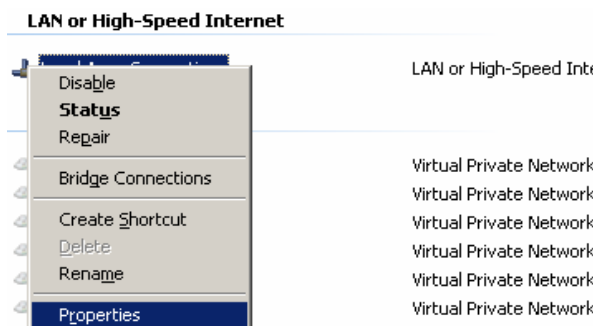


## Enabling XP Firewall on Local Connections.

Go start network connections and left click to open.

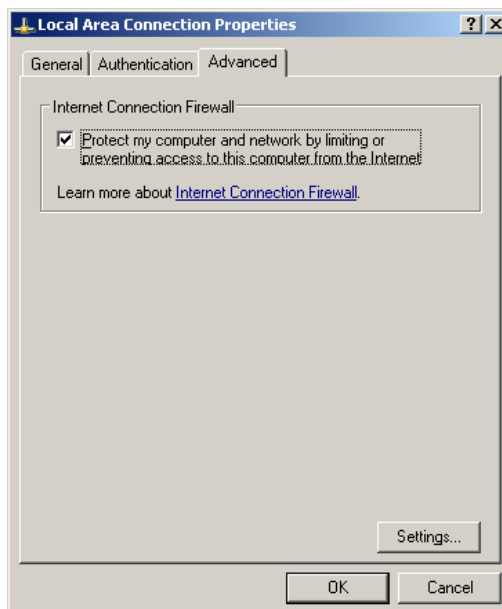


With this now open, right click on the connection that you wish to enable XP firewall, (this can be either a LAN connection or Dial-up connection). Select properties for this.



Now select the advanced tab.

From here now enable the firewall by selecting the tick box, followed by ok.



Now your connection is successfully configured to use XP Firewall.