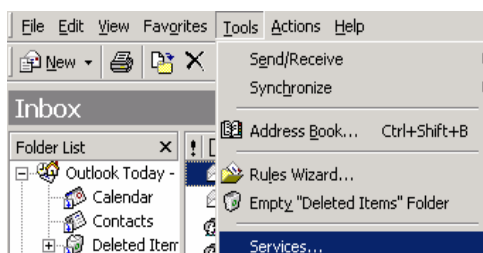
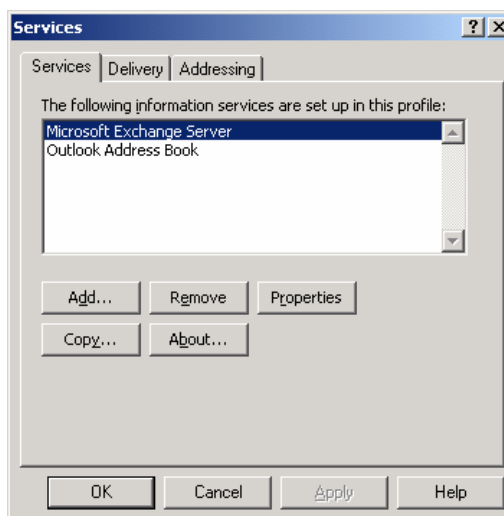


Enabling Dialup Connection Within Outlook 2000

Go to Tools menu and select services.



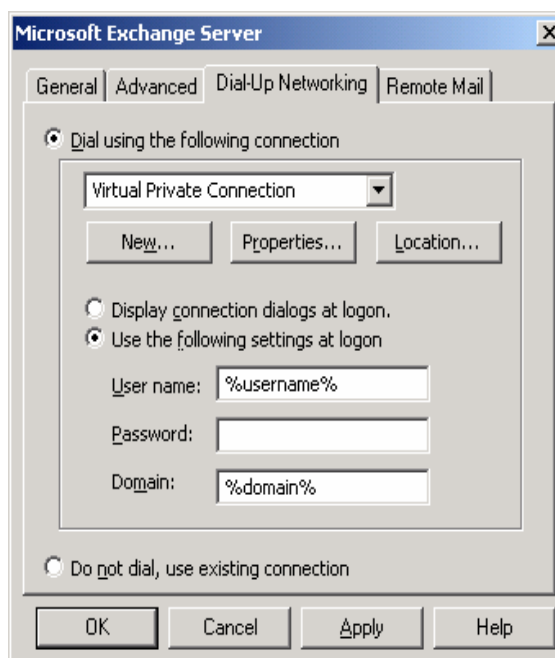
Click Properties from here.



Select the Dial-up networking Tab. Select Dial using the following connection, and scroll to the connection that you would like to use.

Enter your username and password for this connection.

Select OK and OK again to enable options.



Outlook is now configured to use a dialup connection when working off the LAN.