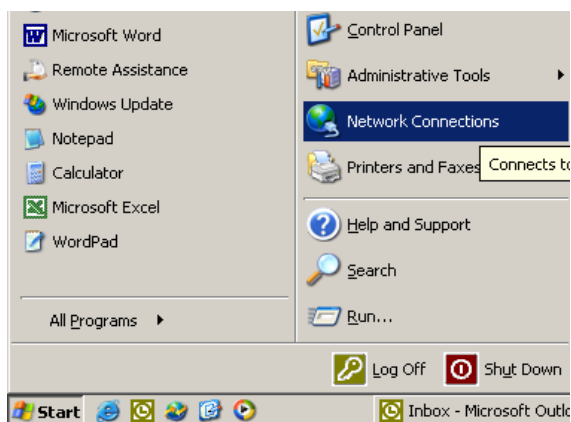


Creating A Microsoft VPN

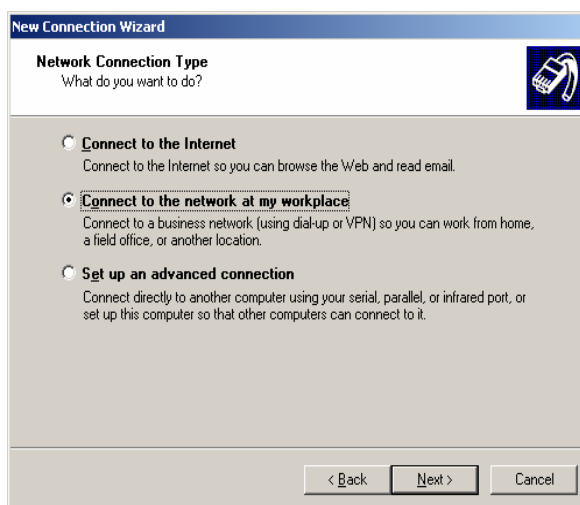
Click Start button and then network connections.



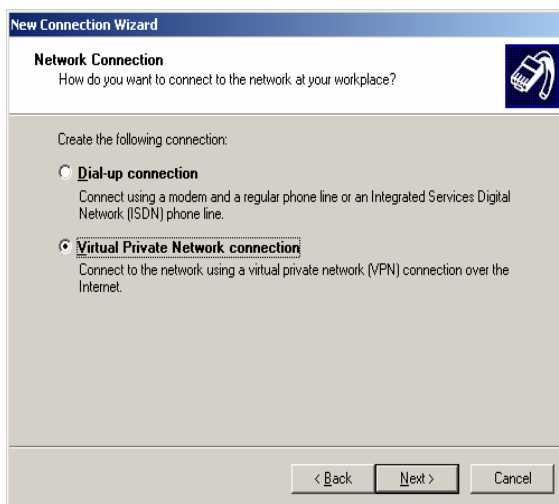
Then select the New Connection wizard.



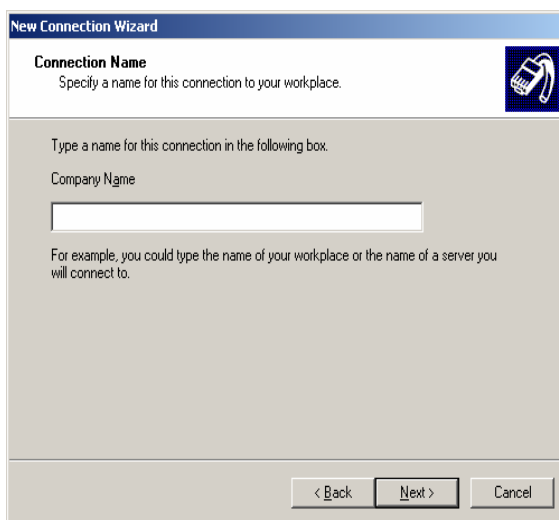
Select next until prompted to choose connection type. Then select the middle option of Connect to the network at my workplace, and click next.



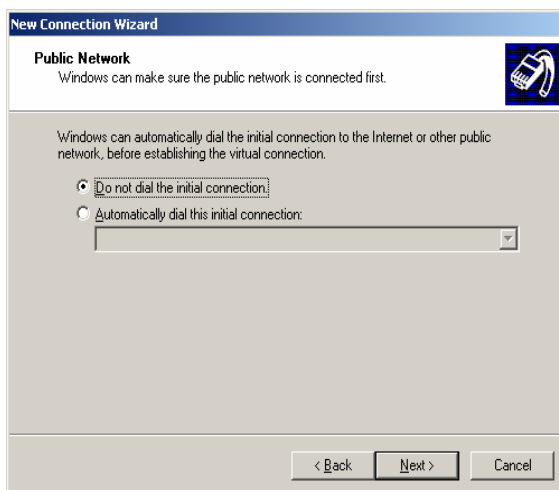
Then select Virtual Private Network connection and click next.



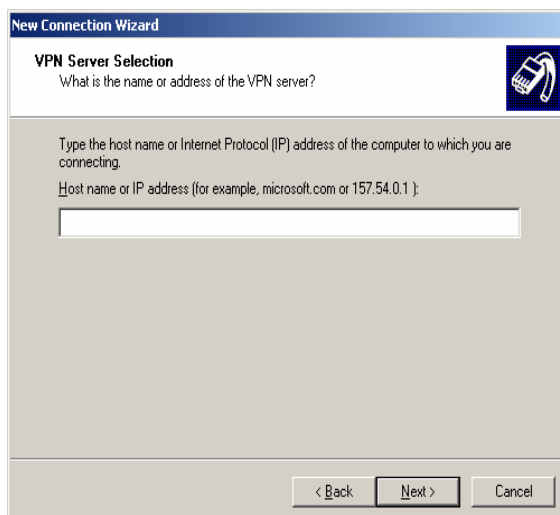
Now enter the company name of the connection to be created and click next.



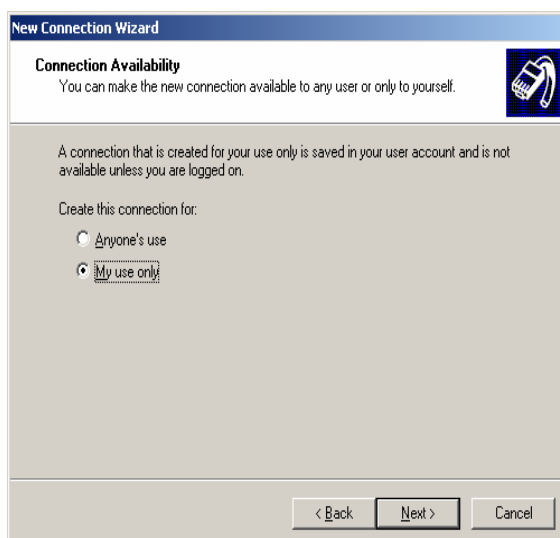
Now choose do not dial the initial connection. The automatically dial option is only used if a dialup connection is required to access the internet.



Now enter the IP address of the host that you wish to connect to. This can also be a hostname if required, e.g. mailgate.plustech.co.uk



Now select the user level required for this connection. Select next and then choose whether to have a desktop shortcut created for this connection and click finish.



Ensure that PPTP VPN is selected within the connection. This can be checked by right clicking the new VPN and then selecting properties. Then choosing the network tab.

