

## Gaining Control with NetMeeting

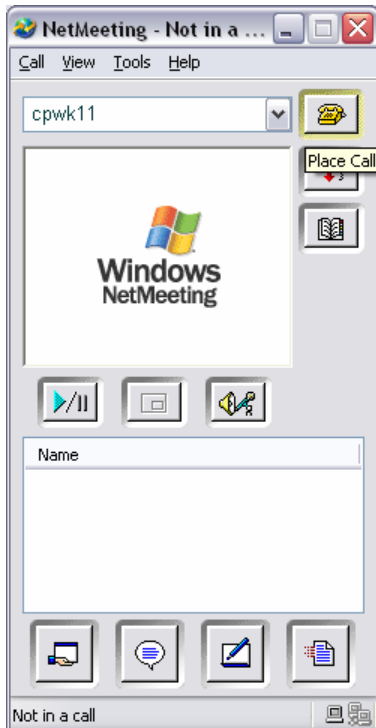
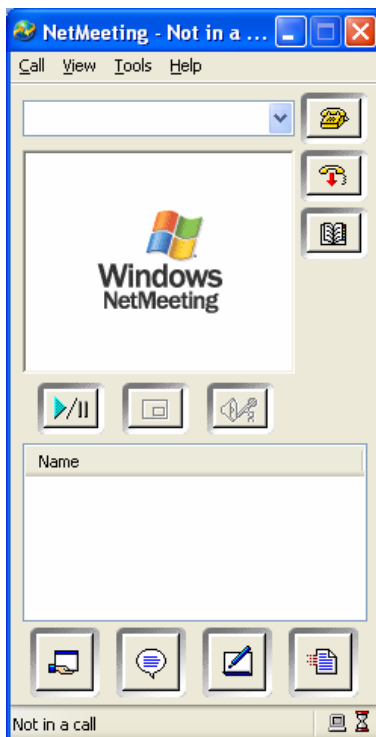
Ensure you are on the same network as the machine you want to control.

Click on “start” > “run” and type “conf” (without the quotes) in the box.

This should start NetMeeting.

Ensure that NetMeeting is configured on the machine that you want to connect to and that you know either the machine name or its IP address.

In the dropdown box type in either the name or IP address of the machine you want to connect to and click “Place Call”.



NetMeeting now tries to call the machine. Once connected it prompts for the “Username”, “Password” & “Domain”.

Enter the Administrator Username/Password and the Domain. Once done you will have full control of the machine.

To give the user back control, go to NetMeeting and click “End Call”

