

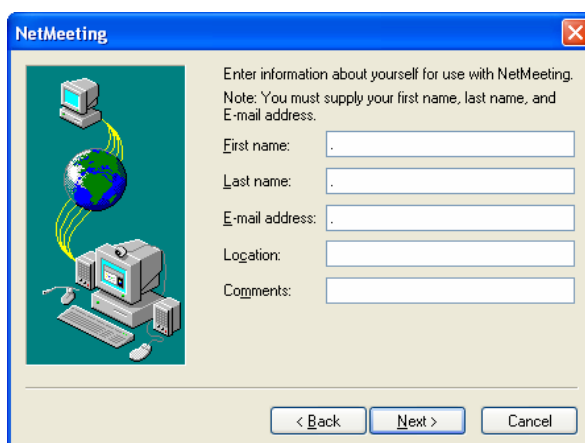
Setting up NetMeeting

Click on “Start” > “run” and type “conf” (without the quotes) in the box.

This will bring up the following screen.



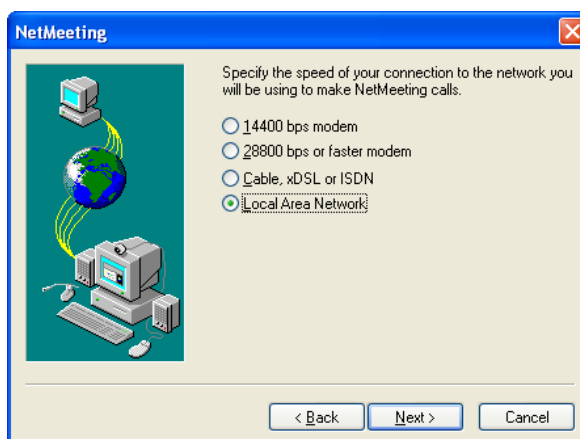
Click on next then enter your relevant details.
>”next”



In the following screen ensure both of the boxes are unchecked



The following screen allows you to choose your network speed. Choose the relevant option. In most cases this will be “Local Area network”



After clicking on “next” you have the option to choose where you want the shortcuts to the program to be located. I suggest that you put a shortcut onto the desktop.



The following screens are for configuring your audio options. If you do not have a sound card then the following screen will appear and you can click on “finish” however if you do have a sound card then accept the default values until you reach the end of the wizard.



Now you have setup NetMeeting. To use NetMeeting you can either type “conf” in the run command on the start menu or double click your NetMeeting desktop icon